

OCMA & Pearson

Visualizing Math

Euan White, Marketing Manager

Katherine Baker-Ross, Portfolio Manager

Melody Vincent, Digital Learning Manager



Pearson

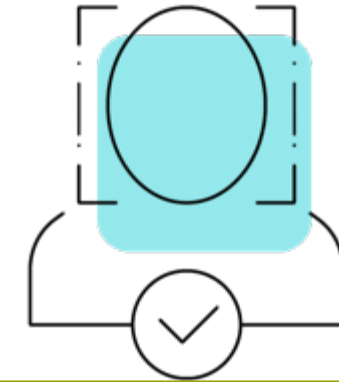
Teaching & Learning Challenges in College Math



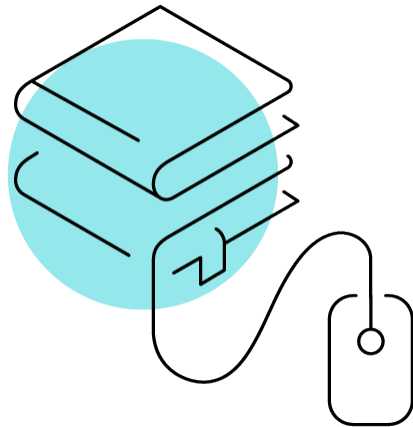
Preparedness



Visualization and
Conceptual Understanding



Motivation



Study Skills



Maintaining Skills

GeoGebra Graphing Exercises

Allows students to interact directly with graphs that reflects how students graph on paper.

- Assess conceptual understanding.
- Expand graphing capabilities.
- Offer more variety/type of exercises.

Assignable within the MyLab.

- Three attempts.
- No graphing palette required.
- Feedback is provided.

No graphing palette needed. Students interact directly with the graph.

Graph the circle

$$x^2 + (y - 1)^2 = 16$$

That's incorrect. Here's why:

The center of your circle is correct.

The radius of your circle is incorrect.

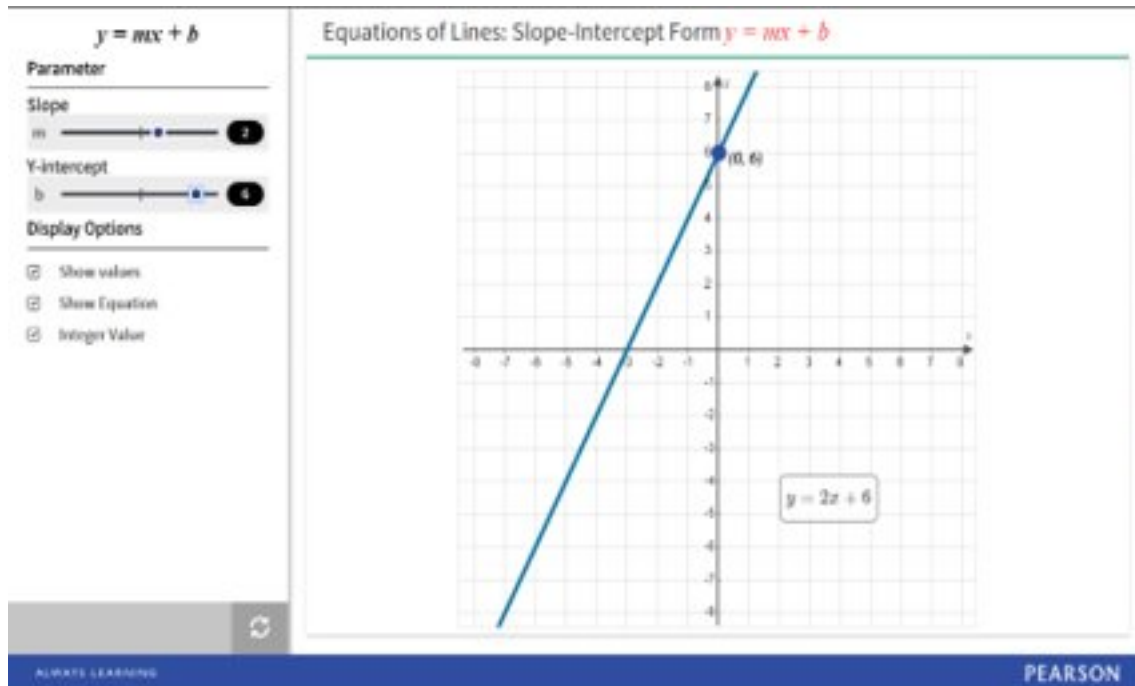
Feedback is given to student after they "check answer".

"Help" icon for help with the player or connect to tech support.

Students receive three tries to reach correct answer, mimicking MLM experience.

Check Answer (2) Save & Submit

Guided Visualizations



Many titles in College Algebra, Precalculus, Calculus, and Business Math include Guided Visualizations.

These animated figures help students visualize the concepts through directed explorations and purposeful manipulation of the figure.

They encourage active learning, critical thinking, and conceptual learning.

These can be shown in class (in person or virtually) to help explain concepts.

[Interactive Sample.](#)

Interactive Calculations

Break-Even Point Analysis

This interactive will generate a break-even chart. Enter a fixed cost, variable cost, and unit selling price, and click **Display Break-Even Chart** to generate a break-even chart for your data.

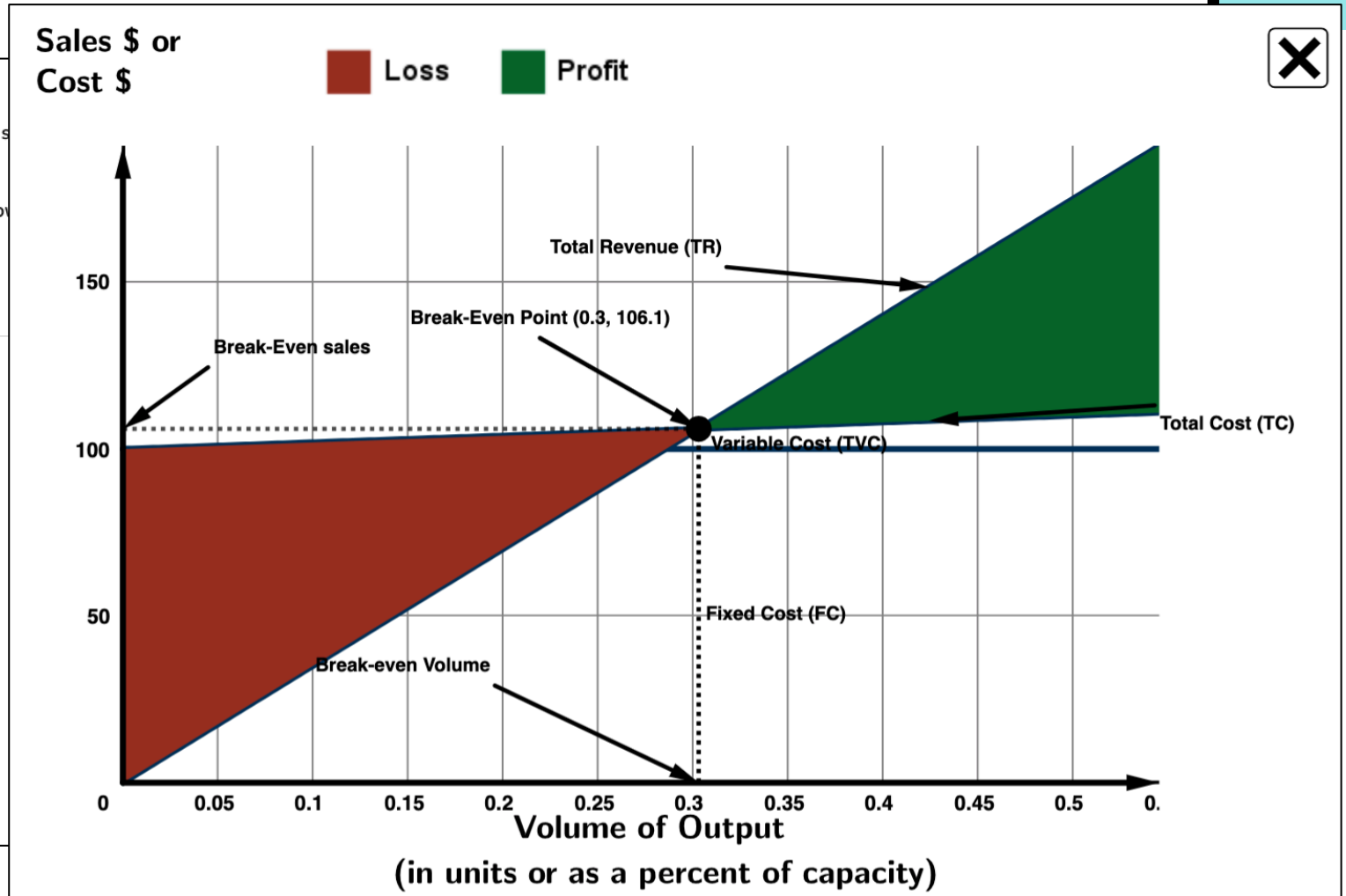
When you are finished analyzing the break-even chart, click the **X** button to close the window or click the **Change Data** button to change the data used to generate the break-even chart.

Interactive Figure

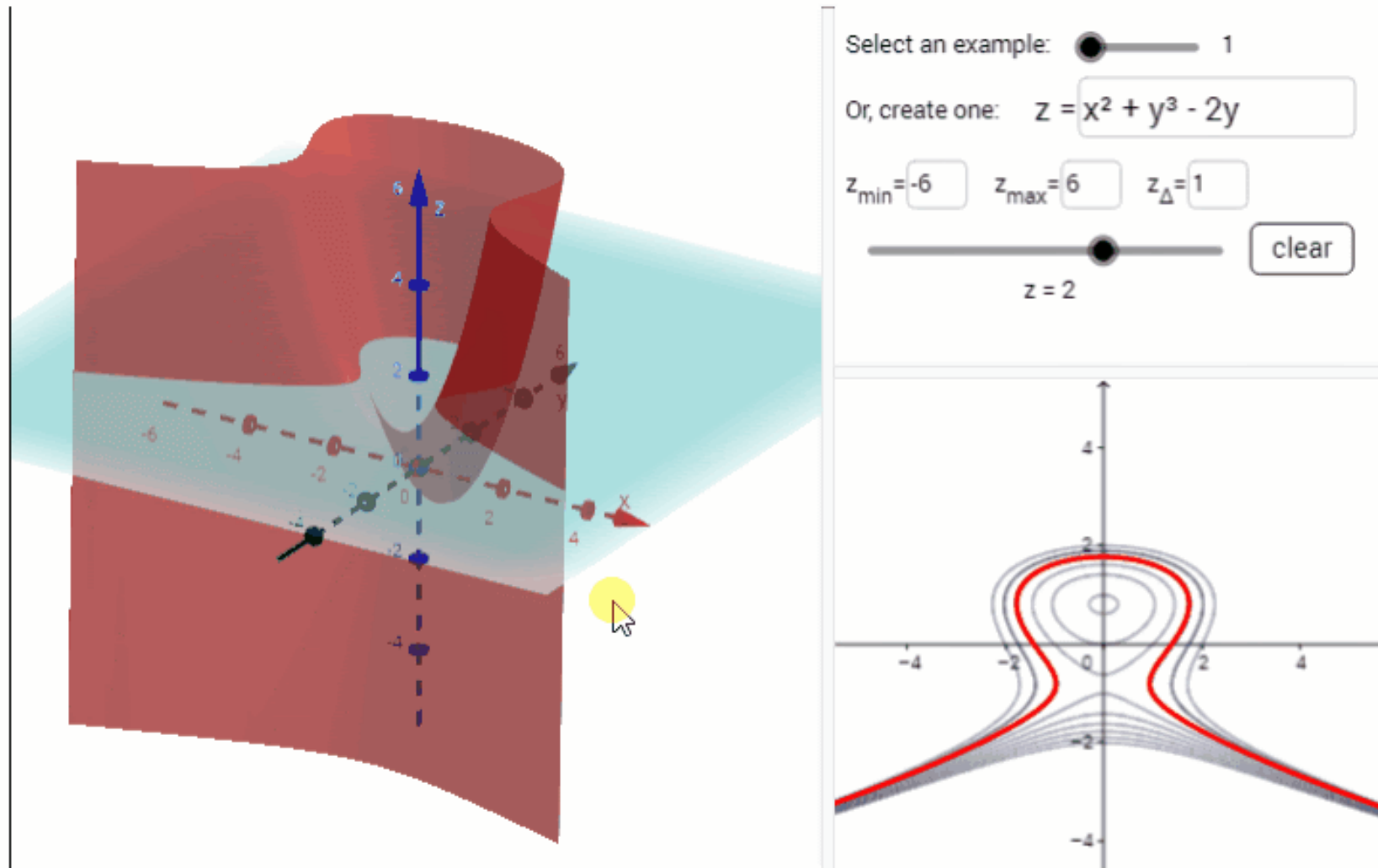
Fixed Cost (\$):

Variable Cost (\$):

Unit Selling Price (\$):



Interactive Figures



College Algebra Essential Video Series



New video series in MyLab Math for College Algebra and Precalculus courses.

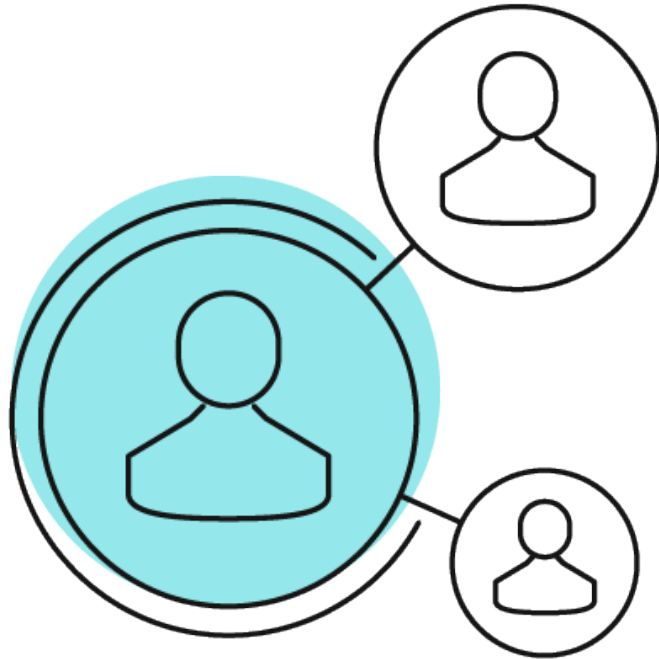
Covers essential topics that a student needs to understand to be successful.

Videos are short – around 5 mins – and can be shown in an online course or available to students on demand.

You can also assign these videos for viewing within the MyLab.

Can also be linked to homework exercises to remind students of crucial content before they begin on their exercises.

Pearson Digital Learning Series



www.pearson.com/us/higher-education/events.html

Free 30-minute Webinars by Faculty, Authors, Pearson employees

- Evidence-based Recommendations for Hybrid Classrooms
- Help Students Effectively Learn from Videos
- Improving Learning Outcomes in the Introductory Statistics Course – Getting Hands-on with Applets
- Supporting Higher Education Students' Mental Health in the COVID-19 Era
- Busting the *"I've Never Been Good at Math"* Myth with your Students



Pearson